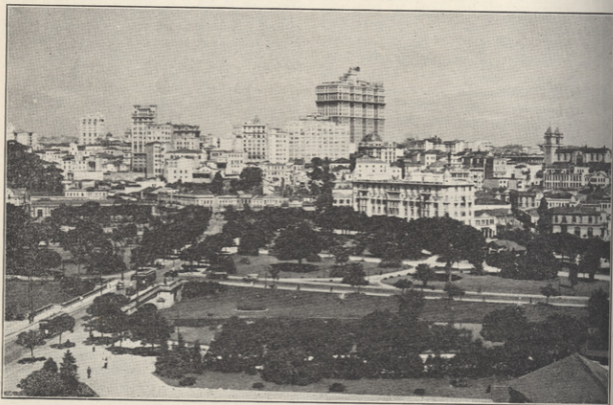




SANTOS, THE LARGEST COFFEE-EXPORTING PORT IN THE WORLD
This partial view shows the coffee loading docks and the Coffee Exchange



PARTIAL VIEW OF SÃO PAULO CITY, CAPITAL OF THE STATE
Showing modern sky-scraper construction in the heart of the business section

THE TWO GREAT COFFEE CITIES OF SÃO PAULO, BRAZIL