

form in English, Spanish and Portuguese.

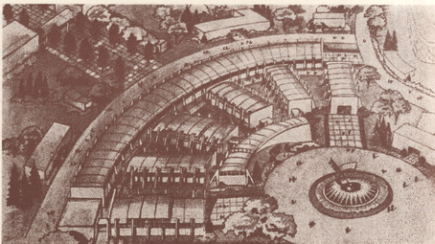
The Congress, on behalf of the State of Parana, invites all of the world's authorities and coffee specialists to present theses for presentation to the meeting. The delegations of all of the producing and consuming countries are requested to do the same. Any paper on any coffee subject will merit careful consideration by the Congress.

Members of the Congress

The following groups and individuals in the coffee exporting and importing countries are invited to participate in the Congress of Curitiba: governments of the respective countries; associations interested in coffee; schools and institutes of coffee trade; state governors and mayors of cities in the coffee growing districts; all coffee growers, exporters, importers, roasters, distributors, retailers, manufacturers of specialized agricultural and industrial machinery, all represented by their respective coffee associations.

World Coffee Exposition

The International Coffee Exposition will open December 19 and will remain open for four months, and will complete the work of the World Coffee Congress which will adjourn the same day. The State of Parana has reason to expect that, apart from its world wide purposes, the Exposition will represent an objective summary of the history of Brazil coffee production, a general accounting of Brazil coffee production, a general accounting of Brazil's present coffee



An artist's conception of the buildings at the Parana Centennial Celebration where the various Brazil and foreign coffee exhibits will be shown. Entire grounds will be landscaped with coffee saplings and trees.

activities, and an estimate of her future possibilities.

In addition to the eleven pavilions featuring coffee, there will be other pavilions depicting all phases of Parana's economic, social and cultural achievements.

Eleven Coffee Pavilions

The International Coffee Exposition will be housed in eleven pavilions. A casino, concert hall, conference hall and theatres will also be featured. The coffee pavilions will be assigned as follows: (1) history of coffee; (2) soil recuperation and erosion; (3) coffee cultivation; (4) prevention of plagues and diseases; (5) coffee economy—statistics and information on export, import, immigration, labor, social problems, propaganda; (6) national and for-

eign agricultural machinery; (7) coffee sampling; (8) Brazilian coffee producing states; (9) foreign coffee producing countries; (10) importing, roasting and distribution (the American pavilion), and (11) Europe, South Africa, Japan, India and other importing countries.

The location of the eleven coffee pavilions has been well chosen close to the center of Curitiba on an extension of the city's main street, Rua 15 de Novembro. The buildings will be of one story wood and aluminum structure.

Further information concerning attendance, exhibits or any other phase of either the Congress or Exposition may be had by writing to Ambassador Sebastiao Sampaio, Secretary General of the International Coffee Exposition, at his offices at 3 Rua 13 de Maio, Rio de Janeiro.



The port of Paranaguá has become one of the world's leading coffee ports in recent years. The pictures above show the harbor with its warehouses for handling coffee, coffee being loaded aboard a steamer, and a general view of the city and harbor. Paranaguá is located on a lagoon-like harbor, one of America's best.